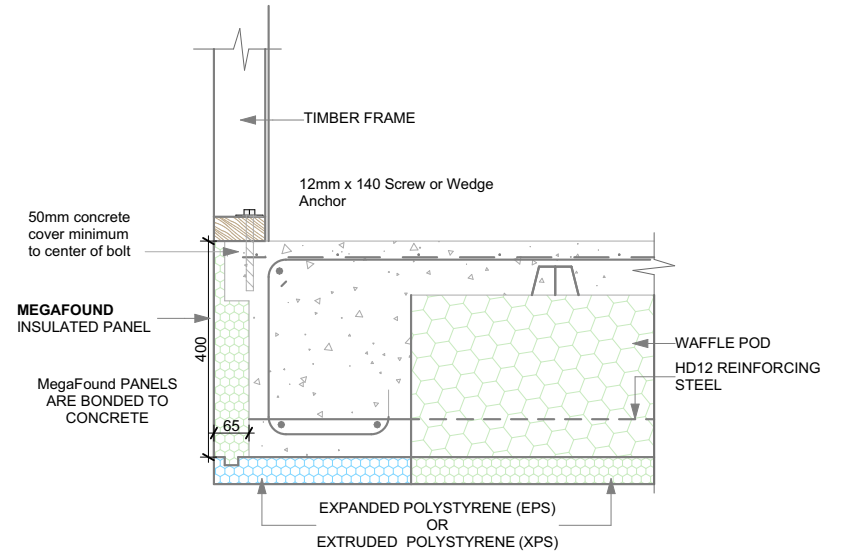


**MEGAFOUND FULLY INSULATED FOUNDATION SYSTEMS
WITH 140mm TIMBER FRAME CLAD EXTERNAL WALL**



**MEGAFOUND FULLY INSULATED FOUNDATION SYSTEMS
WITH 90mm TIMBER FRAME CLAD EXTERNAL WALL**

NOTE:
ALL REINFORCEMENT SHOWN IS INDICATIVE ONLY. ADDITIONAL REINFORCEMENT MAY BE NEEDED TO MEET SPECIFIC REQUIREMENTS (E.G. STRENGTH, STABILITY, DURABILITY, APPEARANCE, ETC.) RELEVANT TO THE ELEMENT BEING DESIGNED, AND TO ENSURE THAT THE DESIGN IS FIT FOR PURPOSE. FINAL DESIGN TO BE OVERSEEN BY AN APPROPRIATELY QUALIFIED STRUCTURAL ENGINEER.

50mm EPS VH GRADE INFORMATION.
COMPRESSIVE STRENGTH 165 KPA AT 10% DEFORMATION (MIN).
2% DEFORMATION GIVES 100 KPA COMPRESSIVE STRENGTH.
THIS VALUE WILL ONLY EXPERIENCE 1-2mm OVERALL DEFLECTION R-VALUE 1.43.

MEGAFOUND FULLY INSULATED FOUNDATION SYSTEMS